

EXPERT TOOL TRANSFER

ENSURING A RAPID RETURN
TO PRODUCTION

Medbio's Transfer Team has the knowledge and expertise to guide you through a successful tool transfer so you can get back up and running. With hundreds of successful transfers, Medbio will help you rest easy, knowing you have an experienced and reliable partner in your corner.



1

Scope Assessment & Quotation

We meticulously outline the scope and expectations to ensure a streamlined and successful tool transfer with: *Part Specifications | Drawings | Capacity | Materials | Tools & Support Equipment*

2

Comprehensive Tool & Part Analysis

Our proactive approach ensures we can quickly identify any areas that may cause delays: *Evaluate quality requirements | Confirm production capabilities | Comprehensive tool evaluation | Provide a detailed timeline & quote*

3

Recommendations & Modifications

We outline key actions and modifications that may be required to bring the tool back to optimal performance. Having our own in-house toolroom saves you time on updates and ongoing tool maintenance.

4

Quality Control & Monitoring

Our team will closely communicate with you and follow up to ensure a stringent quality control process with consistent, reliable output, including IQ/OQ/PQ qualifications documentation.

5

Production

We utilize the latest technology and equipment to produce your parts with precision and efficiency. Production is scheduled to meet your timing needs, including any assembly, packaging and labeling requirements.

We sweat the details
so you don't have to.



Medbio's team of **in-house experts**

We conduct an extremely detailed and thorough tool analysis that ensures the tool will run smoothly and provide the desired results.

ISO 13485
ISO 9001
ISO 14001

CERTIFIED

FDA

REGISTERED



The combination of our proven process, along with the latest technologies and equipment, allows Medbio to find the perfect balance of detailed analysis and quick execution.

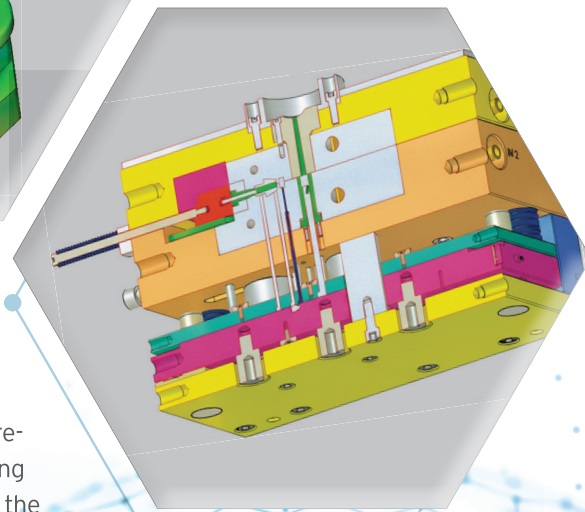
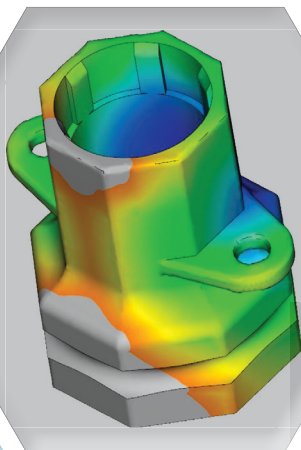
By leveraging our capabilities, we can:

- Drive manufacturing costs down
- Ensure the highest levels of quality and reliability
- Deliver a quick return to production
- Make this EASY for you



32
POINT

We conduct a **32-point checklist** for everything from the mold base and cavity/core inserts and pins to the slides, lifters, runners and gates to the cooling, ejection and venting elements.



Key technologies like laser scanning and mold flow analysis to help identify potential performance issues.

Range of performance enhancements from re-alignment of leader pins to common de-scaling of cavity spare inserts, and refurbishment of the hot runner manifold are common.

